



# *Networking Across the Clusters & Beyond*

**Eddie Downey**  
**Deputy President**  
**The Irish Farmers' Association**

**Rural Network NI**  
**Corrs Corner Hotel**  
**Newtownabbey**

**Thursday, 6<sup>th</sup> October 2011**

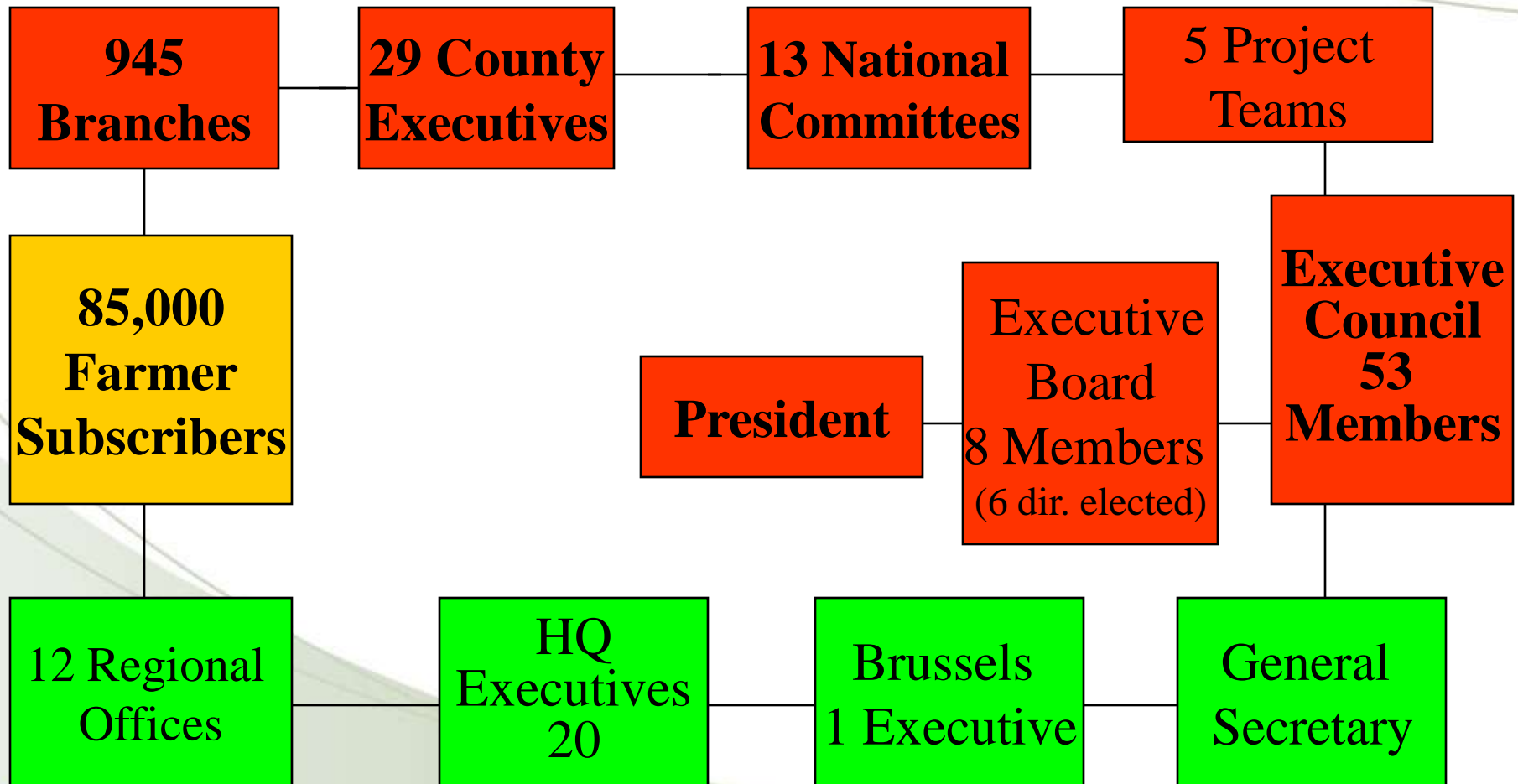


# ~ Agenda ~

- IFA Structure
- The Irish Countryside
  - A Place for living, working and enjoyment
- A Place to Live
- A Place to Work
- A Place to Enjoy
- Rural Forum



# ~ IFA Structure ~







*A Policy Framework for Supporting Rural Ireland*

# **The Irish Countryside**

*A Place for living, working and enjoyment*





*Farm as if you'll farm forever*

*Live as if you'll die tomorrow*

# ~ Countryside Policy Framework ~



A  
Place  
to  
Live



A  
Place  
to  
Work



A  
Place  
to  
Enjoy



# ~ A Place to Live ~

## Rural Planning

- Place the *Sustainable Rural Housing Guidelines* on a statutory footing
  - Grant planning permission to families who wish to live and work in the local community
- Rural Representation on the Planning Appeals Board – An Bord Pleanála



# ~ A Place to Live ~

## Communications Infrastructure

- Broadband – Rural Access Improving
  - Download Speed – 10.4Mps by 2012
- Telephone & Postal Infrastructure
  - Universal Service Obligation
    - Cost Equalisation



# ~ A Place to Live ~

## Proposed Septic Tank Charges & Inspections

440,000 private houses – own septic tank system

- Opposed to any inspection/registration charge
- Risk Based Approach to Monitoring & Inspection
- Retrofit Scheme



# ~ A Place to Live ~

## Rural Security

- Legislation must be introduced that allows homeowners to use justifiable force against an intruder
- Senior Alert scheme - personal pendant alarms and home alarms
- Introduce a Scrap Metal Compliance Scheme



# ~ A Place to Live ~

## Severe Weather Conditions

- Civic Amenity Sites - Grit & Salt Collection Points – Websites
- Contract with Farmers – clearing of “black-spots”
- Indemnification of Farmers who grit roads



# ~ A Place to Work ~

## Supporting Rural Enterprise

- Sustaining Job Scheme - €5,000
- Code of Conduct for Business Lending to Small & Medium Enterprises - Statutory
- Full review of Leader programme
  - Funding for food-type projects must be restored



# ~ A Place to Work ~

## Rural Renewable Energy

- Green – Energy Unit: co-ordinate inter-agency activity
- Realistic Feed-In Tariffs
- Renewable Use Obligation Rates – Public Buildings
- Renewable Heat Incentive Schemes



# ~ A Place to Enjoy ~

## Rural Recreation

- Extension of the Rural Walks Scheme
- Litter
  - National Rural Spring Clean Week
  - Civic Amenity sites on the outskirts of towns & villages
  - Changes to litter laws (threat of fines)
  - National Litter Action Taskforce

# ~ Countryside Policy Framework ~



**RURAL FORUM**

A  
to  
Live

Place  
to  
Work

A  
Place  
to  
Enjoy



# Thank You

If you have any additional questions please contact:

Thomas Ryan

IFA Environment & Infrastructure Executive Secretary

01 4500 266

THANK YOU

